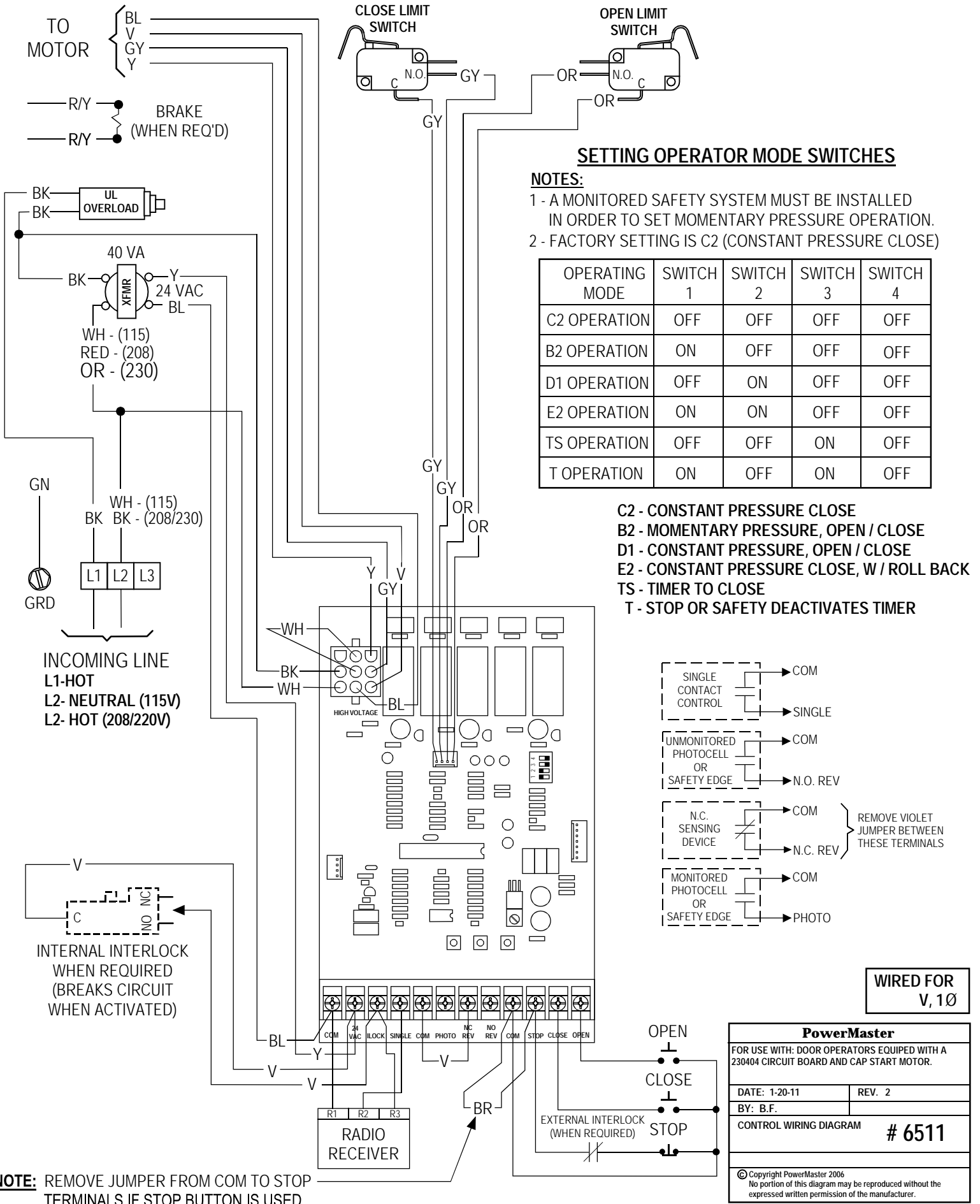


NOTE: INTERNAL START SWITCH, IN MOTOR, MUST NOT BE USED WITH THIS TYPE OF WIRING.



SETTING OPERATOR MODE SWITCHES

NOTES:
 1 - A MONITORED SAFETY SYSTEM MUST BE INSTALLED IN ORDER TO SET MOMENTARY PRESSURE OPERATION.
 2 - FACTORY SETTING IS C2 (CONSTANT PRESSURE CLOSE)

OPERATING MODE	SWITCH 1	SWITCH 2	SWITCH 3	SWITCH 4
C2 OPERATION	OFF	OFF	OFF	OFF
B2 OPERATION	ON	OFF	OFF	OFF
D1 OPERATION	OFF	ON	OFF	OFF
E2 OPERATION	ON	ON	OFF	OFF
TS OPERATION	OFF	OFF	ON	OFF
T OPERATION	ON	OFF	ON	OFF

C2 - CONSTANT PRESSURE CLOSE
B2 - MOMENTARY PRESSURE, OPEN / CLOSE
D1 - CONSTANT PRESSURE, OPEN / CLOSE
E2 - CONSTANT PRESSURE CLOSE, W / ROLL BACK
TS - TIMER TO CLOSE
T - STOP OR SAFETY DEACTIVATES TIMER

WIRED FOR V, 1Ø

PowerMaster
 FOR USE WITH: DOOR OPERATORS EQUIPPED WITH A 230404 CIRCUIT BOARD AND CAP START MOTOR.
 DATE: 1-20-11 REV. 2
 BY: B.F.
 CONTROL WIRING DIAGRAM # 6511
 © Copyright PowerMaster 2006
 No portion of this diagram may be reproduced without the expressed written permission of the manufacturer.

NOTE: REMOVE JUMPER FROM COM TO STOP TERMINALS IF STOP BUTTON IS USED.