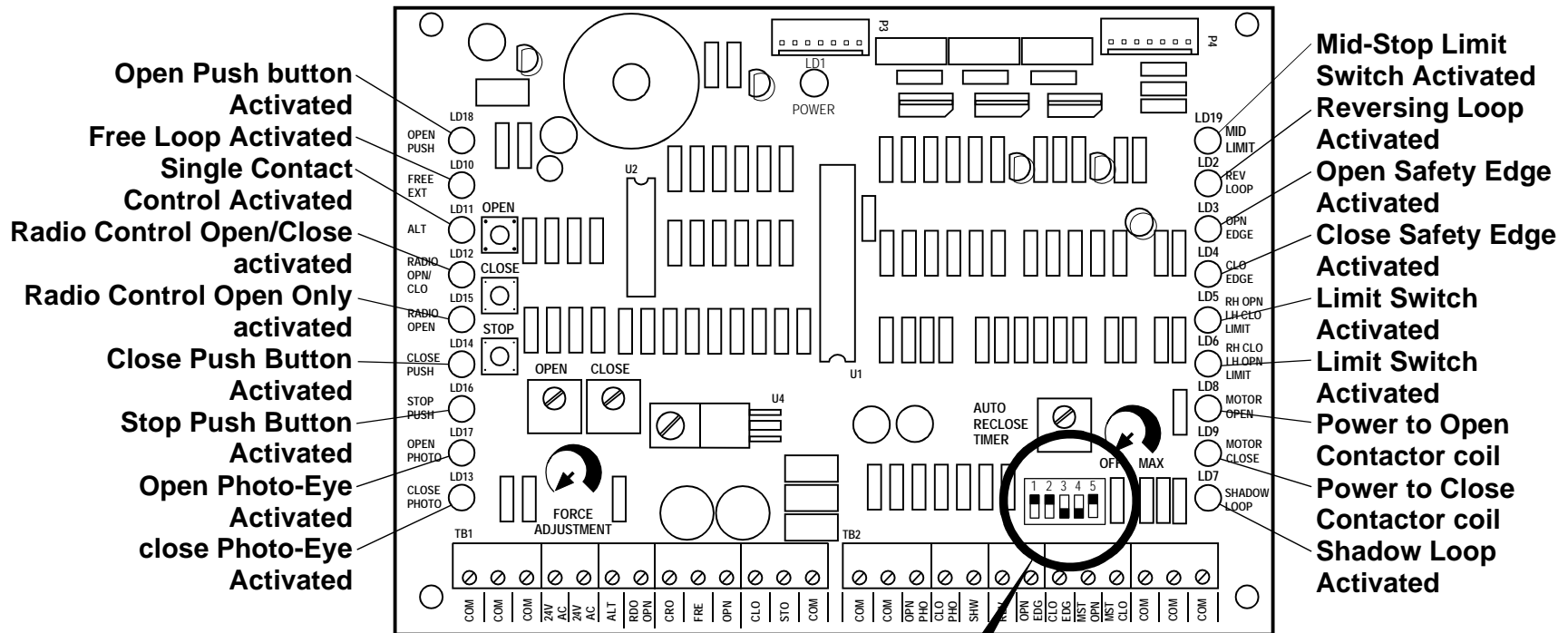


LED AND DIP SWITCH INFORMATION FOR 2004 UMCB-01 CONTROL BOARD



DIP SWITCHES

- S1 - OFF = NORMAL OPEN/CLOSE PB**
ON = SAFETY/SECURE MODE
- S2 - OFF = RIGHT HAND**
ON = LEFT HAND
- S3 - OFF = N.O. STOP**
ON = N.C. STOP
- S4 - OFF = NORMAL**
ON = 3 SEC. PRE-MOVE
- S5 - OFF = SINGLE OR MASTER MODE**
ON = SLAVE MODE