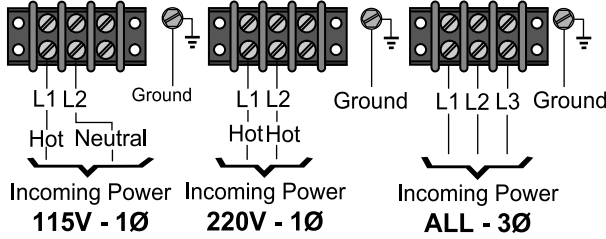
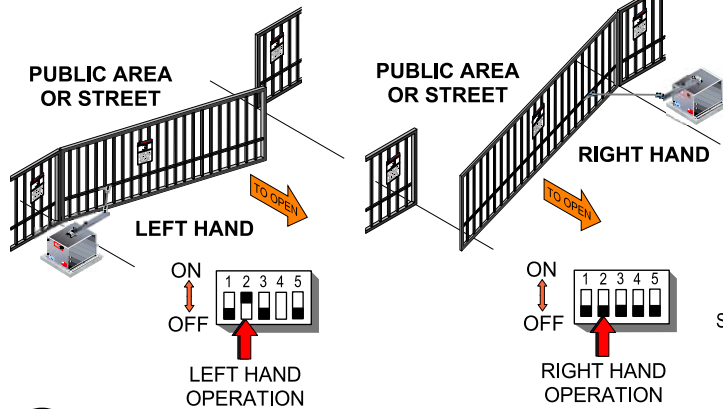


- 1** ENSURE GATE MOVES SMOOTHLY IN BOTH DIRECTIONS.
- 2** MECHANICALLY INSTALL OPERATOR. **NOTE:** SEE MANUAL.
- 3** BEFORE MAKING ELECTRICAL CONNECTIONS MAKE SURE POWER IS TURNED OFF AT SOURCE.

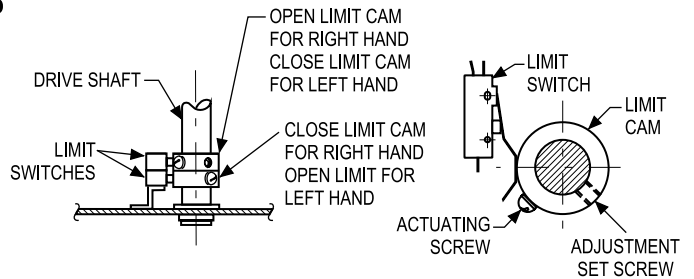
- 4** MAKE POWER SUPPLY CONNECTION THAT MATCHES YOUR INSTALLATION.



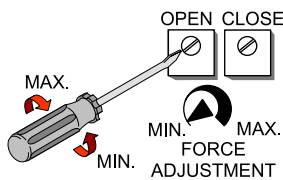
- 5** DETERMINE HAND OF OPERATOR AND SET DIPSWITCH #2 AS SHOWN BELOW.



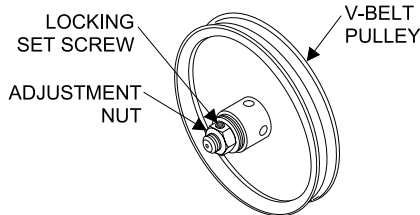
- 6** TURN ON POWER AND USE ON BOARD 3 BUTTON STATION TO OPEN AND CLOSE POSITION SET RESPECTIVE LIMIT AT EACH LOCATION.
- NOTE:** IF OPERATOR DOES NOT STOP WHEN EITHER OPEN OR CLOSE IS REACHED PRESS STOP, ADJUST LIMIT CAM.
- NOTE:** IF OPERATOR RUNS IN WRONG DIRECTION CHECK DIPSWITCH #2 IF SWITCH #2 IS CORRECT AND OPERATOR IS 3Ø SWITCH 2 INCOMING POWER LEADS.



- 7** SET FORCE ADJUSTMENT. FORCE ADJUSTMENT ON THE BOARD MAY BE TURNED TO MAXIMUM FORCE FULLY CLOCKWISE SENSITIVITY WILL BE ADJUSTED BY THE CLUTCH.



- 8** CLUTCH ADJUSTMENT. CLUTCH PRESET BY FACTORY TO HANDLE MOST INSTALLATIONS. IF MORE SENSITIVITY IS REQUIRED ON A LIGHTER GATE. TURN OFF POWER LOOSEN LOCKING SET SCREW, TURN ADJUSTMENT NUT COUNTER CLOCKWISE 1/4 TURN. FOR AN EXTRA HEAVY GATE TURN ADJUSTMENT NUT CLOCKWISE 1/4 TURN. **NOTE:** REFER TO MANUAL.



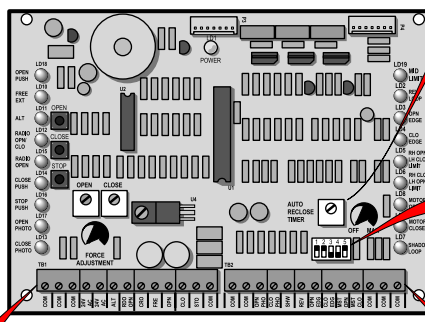
WARNING

NEVER INCREASE FORCE SETTING OF CLUTCH TO MAKE UP FOR A GATE THAT IS NOT MAINTAINED OR INSTALLED PROPERLY THIS WILL DESENSITIZE THE OPERATION OF THE SAFETY SYSTEM.

WARNING

TO AVOID RISK OF INJURY MAKE SURE POWER IS TURNED OFF BEFORE MAKING ANY ADJUSTMENTS.

- 9** CONNECT CONTROL AND SAFETY DEVICES.



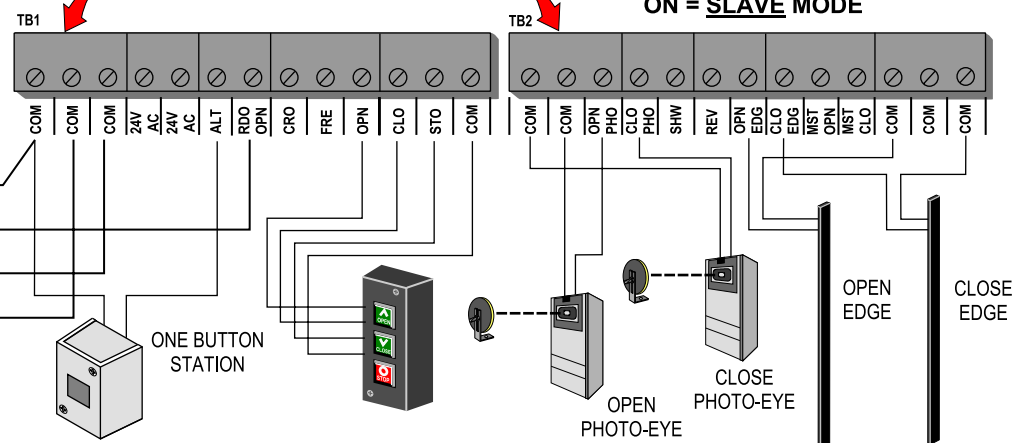
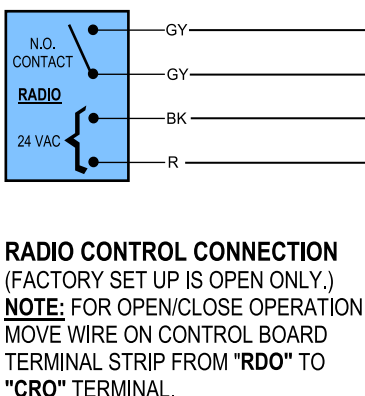
TIMER TO CLOSE ADJUSTABLE 0-60 SECONDS

DIPSWITCHES

- S1 - OFF = NORMAL OPEN/CLOSE PB
ON = SAFETY/SECURE MODE
- S2 - OFF = RIGHT HAND
ON = LEFT HAND
- S3 - OFF = N.O. STOP
ON = N.C. STOP
- S4 - OFF = NORMAL
ON = 3 SEC. PRE-MOVE
- S5 - OFF = SINGLE OR MASTER MODE
ON = SLAVE MODE

WARNING

TO AVOID RISK OF INJURY MAKE SURE POWER IS TURNED OFF BEFORE MAKING ANY CONNECTIONS.



TOLL FREE TECHNICAL SUPPORT
1-800-243-4476
EMAIL TO PMTECH@VEPOWER.NET
WWW.VEPOWER.NET

NOTE: ALL SAFETY DEVICES MUST BE NORMALLY OPEN.