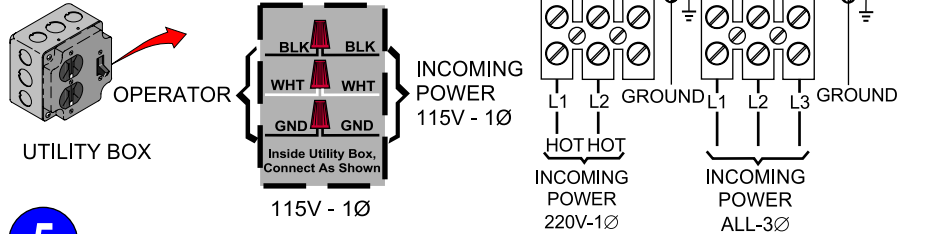


- 1** ENSURE GATE MOVES SMOOTHLY IN BOTH DIRECTIONS.
- 2** MECHANICALLY INSTALL OPERATOR. **NOTE:** SEE MANUAL.
- 3** BEFORE MAKING ELECTRICAL CONNECTIONS MAKE SURE POWER IS TURNED OFF AT SOURCE.

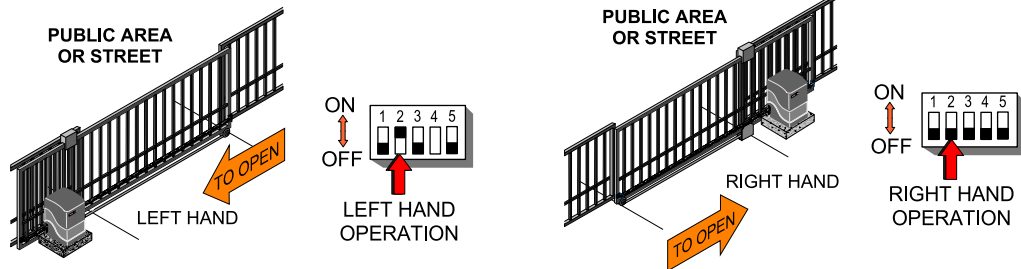
- 4** MAKE POWER SUPPLY CONNECTION THAT MATCHES YOUR INSTALLATION.



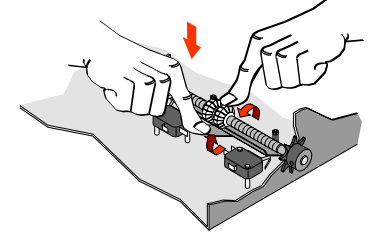
**⚠ WARNING**

TO PREVENT THE RISK OF PERSONAL INJURY OR DEATH: DISCONNECT POWER AT THE FUSE BOX BEFORE PROCEEDING. ELECTRICAL CONNECTIONS MUST BE MADE BY A QUALIFIED INDIVIDUAL. OBSERVE LOCAL ELECTRICAL CODES WHEN WIRING THE OPERATOR

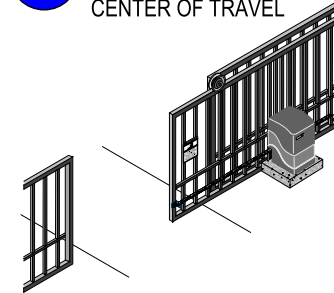
- 5** DETERMINE HAND OF OPERATOR AND SET DIPSWITCH #2 AS SHOWN BELOW.



- 6** SET LIMIT NUTS TO CENTER OF TRAVEL



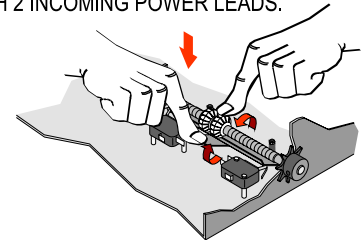
- 7** MANUALLY SET GATE TO CENTER OF TRAVEL



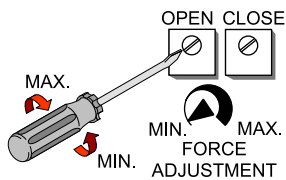
- 8** TURN ON POWER AND USE ON BOARD 3 BUTTON STATION TO RUN OPERATOR TO OPEN AND CLOSE POSITION. SET RESPECTIVE LIMIT NUT AT EACH LOCATION. **NOTE:** IF OPERATOR RUNS IN WRONG DIRECTION CHECK DIPSWITCH #2. IF DIPSWITCH #2 IS CORRECT AND OPERATOR IS 3Ø SWITCH 2 INCOMING POWER LEADS.

**⚠ WARNING**

TO AVOID RISK OF INJURY MAKE SURE POWER IS TURNED OFF BEFORE MAKING ANY ADJUSTMENTS.

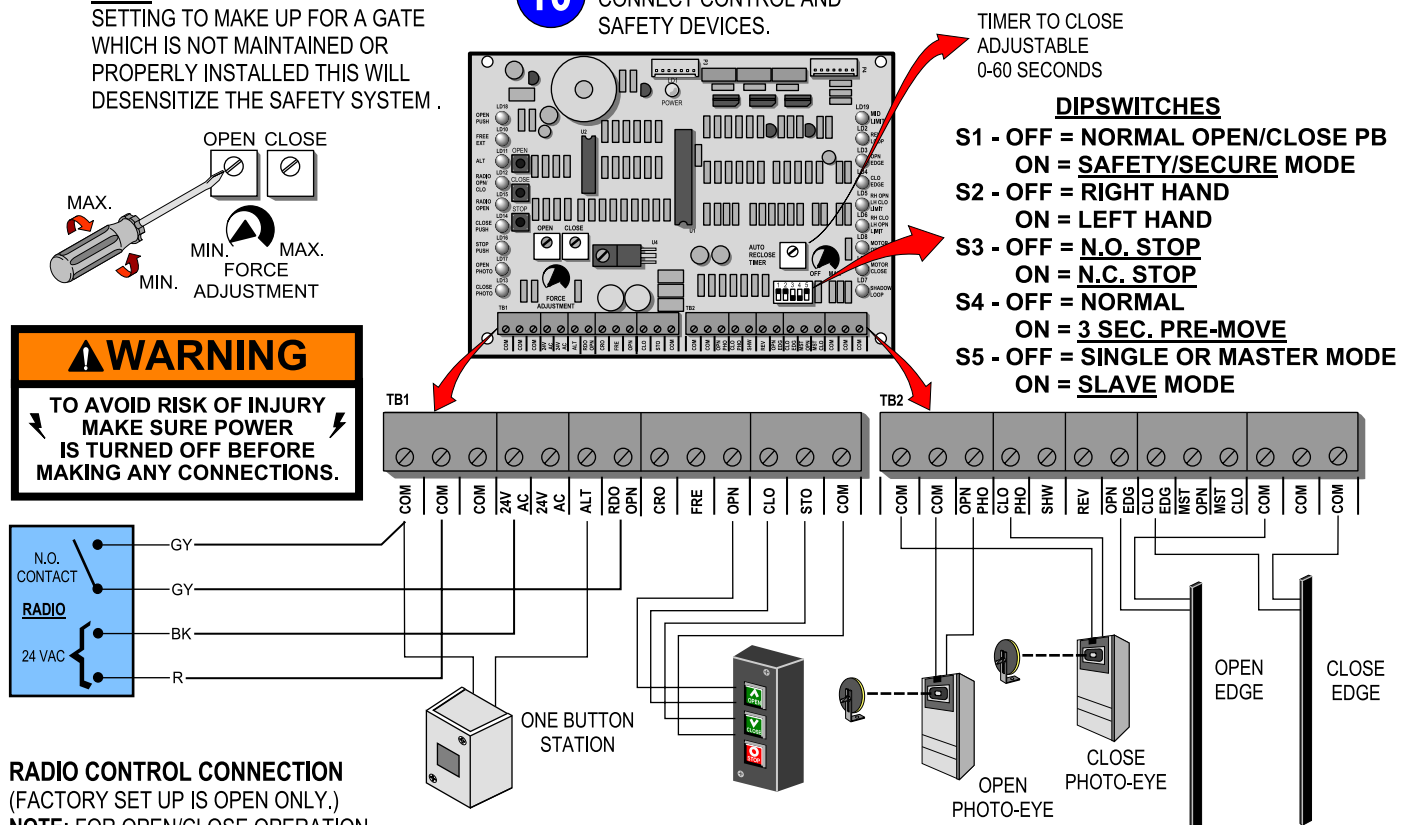


- 9A** FOR OPERATORS WITHOUT A CLUTCH SET FORCE ADJUSTMENT IN BOTH OPEN AND CLOSE DIRECTIONS JUST STRONG ENOUGH TO AVOID NUISANCE ACTIVATION OF THE SAFETY SYSTEM. **NOTE:** NEVER INCREASE FORCE SETTING TO MAKE UP FOR A GATE WHICH IS NOT MAINTAINED OR PROPERLY INSTALLED THIS WILL DENSENSITIZE THE SAFETY SYSTEM.



- 9B** FOR OPERATORS SUPPLIED WITH A CLUTCH FORCE ADJUSTMENT ON THE BOARD MAY BE TURNED TO MAXIMUM FORCE (FULLY CLOCKWISE). SENSITIVITY WILL BE ADJUSTED THROUGH THE CLUTCH WHICH IS FACTORY PRESET TO HANDLE MOST INSTALLATIONS. **NOTE:** FOR EXTRA HEAVY GATES SEE MANUAL FOR CLUTCH ADJUSTMENT.

- 10** CONNECT CONTROL AND SAFETY DEVICES.



**⚠ WARNING**

TO AVOID RISK OF INJURY MAKE SURE POWER IS TURNED OFF BEFORE MAKING ANY CONNECTIONS.

**RADIO CONTROL CONNECTION** (FACTORY SET UP IS OPEN ONLY.) **NOTE:** FOR OPEN/CLOSE OPERATION MOVE WIRE ON CONTROL BOARD TERMINAL STRIP FROM "RDO" TO "CRO" TERMINAL.

**TOLL FREE TECHNICAL SUPPORT**  
 1-800-243-4476  
 EMAIL TO [PMTECH@VEPOWER.NET](mailto:PMTECH@VEPOWER.NET)  
 WWW.VEPOWER.NET

**NOTE:** ALL SAFETY DEVICES MUST BE NORMALLY OPEN.